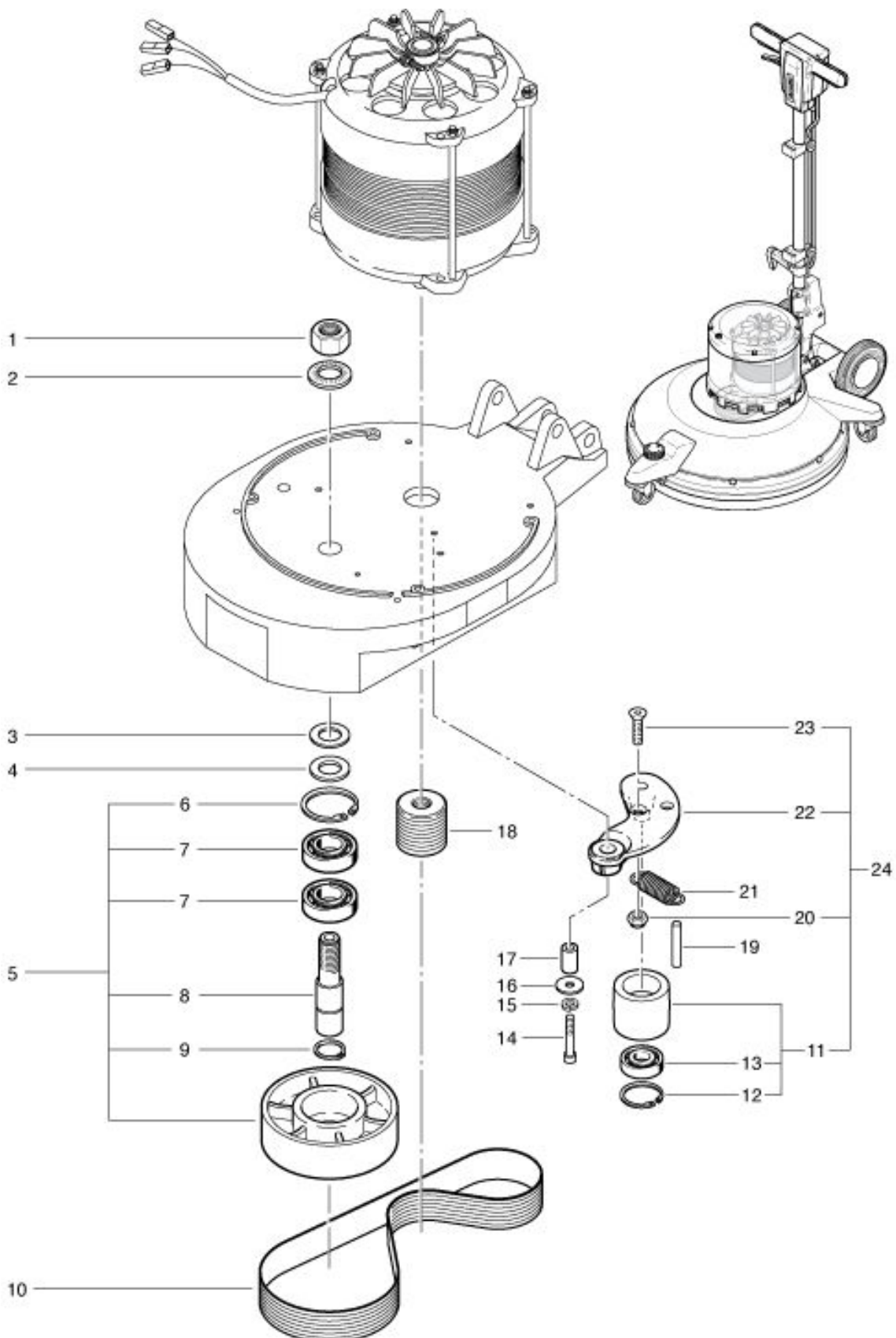


R 53 -1100 / Ultra High-Speed Drive

As at: 03/30/17 Time:14:17



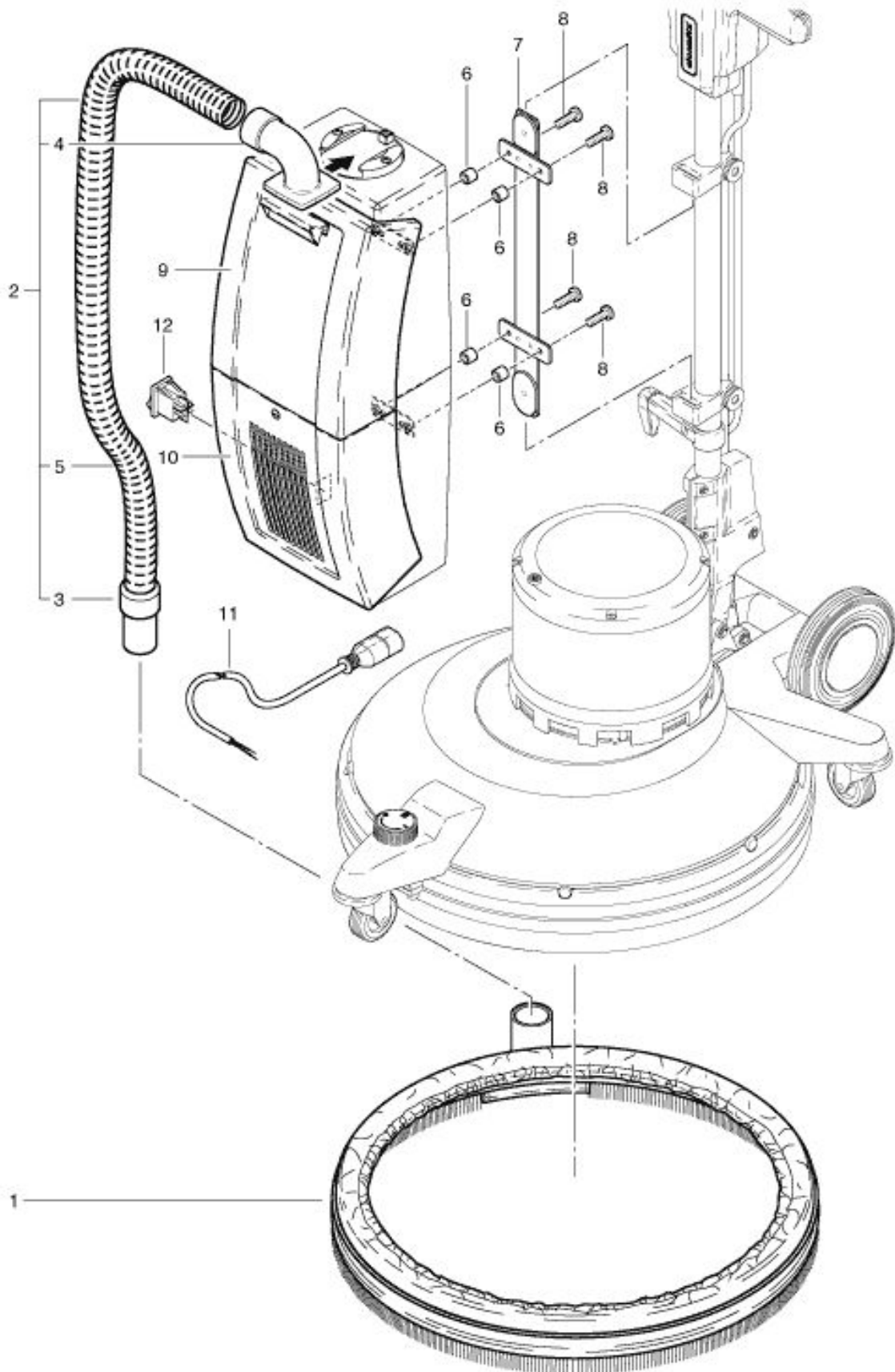
R 53 -1100 / Ultra High-Speed Drive

As at: 03/30/17 Time:14:17

| Pos. | Description | Reference |
|-------------|---|------------------|
| 01 | Hexagon nut M 20 | P...492 R |
| 02 | Locking screw | P...498 Q |
| 03 | Distance washer | 430.151 |
| 04 | Washer DIN 988 20/32/0,5\r\n | P499ww |
| 05 | Drive pulley complete including Items 6-9 | 782.500 |
| 06 | Retaining washer | 782.504 |
| 07 | Ball bearing 6205 2RS | P...316 P |
| 08 | Main shaft | 782.501 |
| 09 | Retaining washer | P...513 D |
| 10 | Poly-V belt | 6390521 |
| 11 | Belt tension pulley compl. | 782.602 |
| 12 | Retaining washer | 782.603 |
| 13 | Ball bearing | 6426442 |
| 14 | Hexagon screw M 8x45 | P...487 T |
| 15 | Lock washer M 8 | P...498 N |
| 16 | Washer M 8 | P...496 Q |
| 17 | Sleeve | 742.135 |
| 18 | Motorpouile | 3711245 |
| 19 | Straight pin 6x50 | P...512 M |
| 20 | Stop nut M 8 | P...492 H |
| 21 | Belt tensioner | 782.203 |
| 22 | Tensioner axle | 742.133 |
| 23 | Srew M 8x35 | P...487 R |
| 24 | Belt tension pulley compl. Pos. 11, 12, 13, 20, 22+23 | 782.600 |

**R 53 -1100 / Ultra High-Speed
Vacuum complete**

As at: 03/30/17 Time:14:18



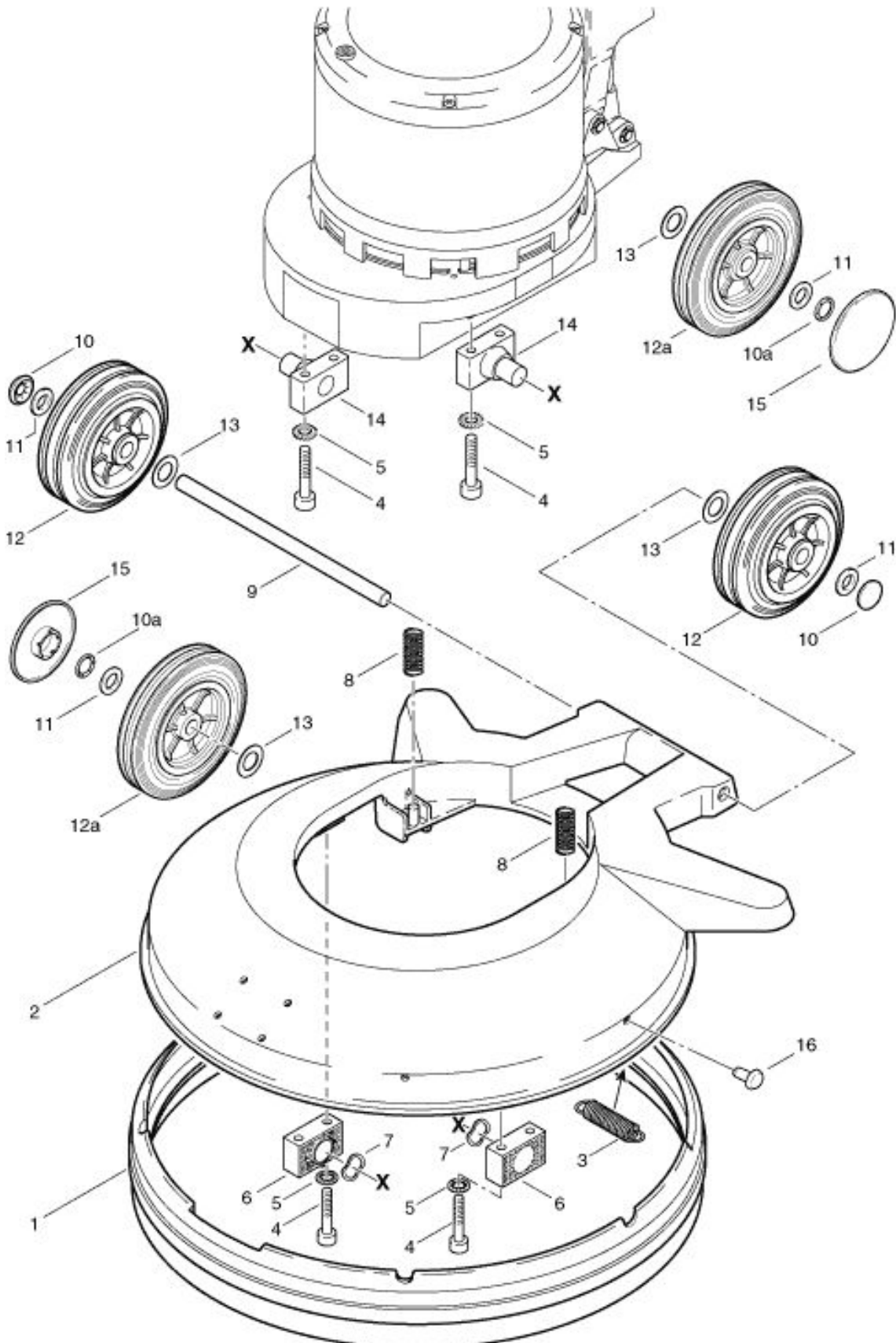
R 53 -1100 / Ultra High-Speed Vacuum complete

As at: 03/30/17 Time:14:18

| Pos. | Description | Reference |
|-------------|--|------------------|
| 01 | Vacuum ring compl. Ø 530 mm | 782.650 |
| 02 | Suction hose complete, including items 3,4+5 | 780.930 |
| 03 | Hose end connector 32 mm | P...562 C |
| 04 | Hose end connector | 025.071 |
| 05 | Suction hose | 780.931 |
| 06 | Distance piece 5x10x10 | P...509 F |
| 07 | Support | 780.942 |
| 08 | Screw M 5x20 | P...476 F |
| 09 | Dust-cover complet | 025.111 L |
| 10 | Filter-cover preassembled | 025.242 L |
| 11 | Electrical connection\r\n | 780.937 |
| 12 | Tumbler switch LED | P...240 F |

R 53 -1100 / Ultra High-Speed Housing and drive axle

As at: 03/30/17 Time:14:19



Gehäuse und Fahrwerk

R 43 / R 53-1100

Carter et train de transport / Housing and drive axle

B 5-11.2003

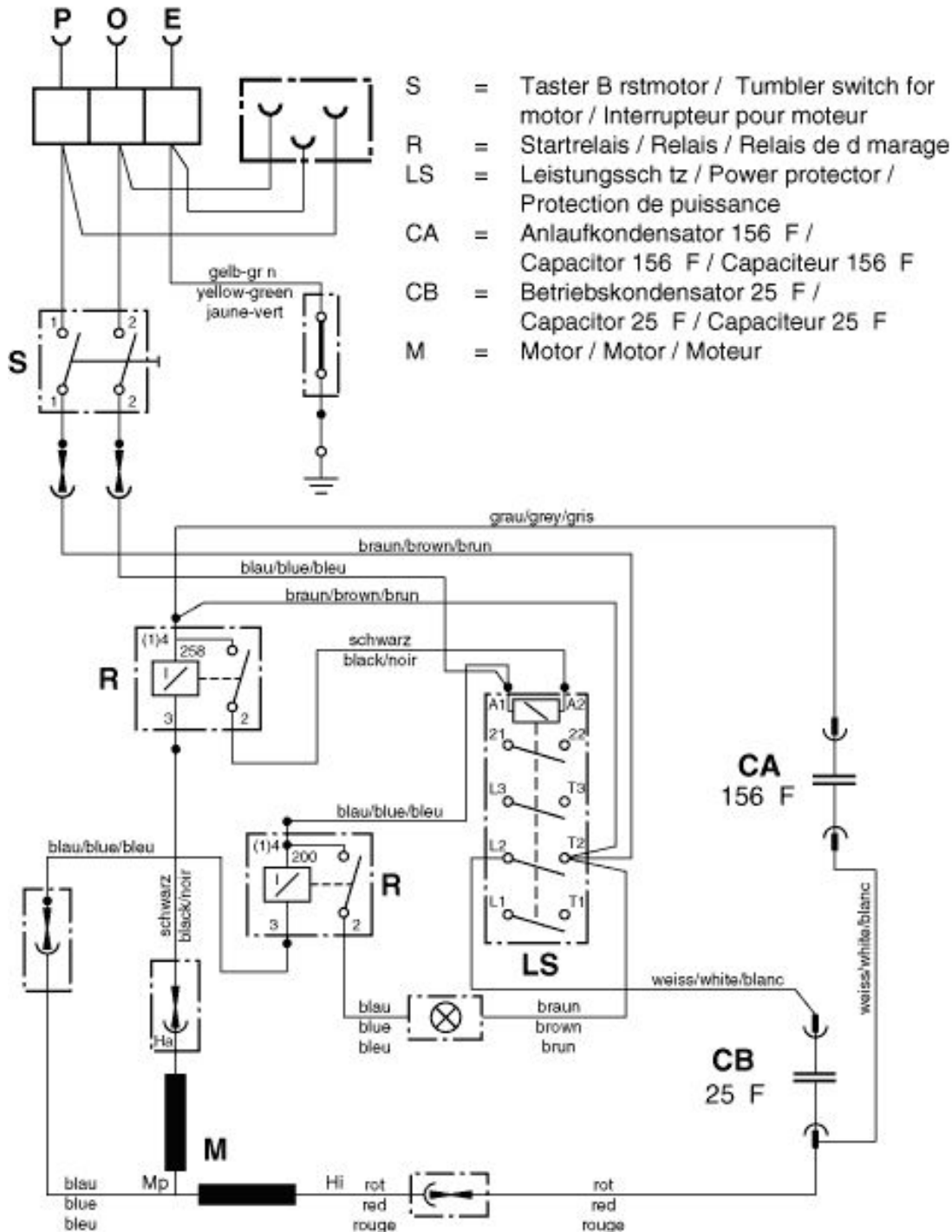
R 53 -1100 / Ultra High-Speed Housing and drive axle

As at: 03/30/17 Time:14:19

| Pos. | Description | Reference |
|-------------|---|------------------|
| 01 | Buffer for housing R 43 up to machine no. 8344 | 2711411 |
| 01. | Buffer for housing R 53 up to machine no. 8344 | 2711408 |
| 01.. | Buffer for housing R 53 beg. machine no. 8345.001 | 789.120 |
| 02 | Machine housing R 43 red | 3711355 |
| 02. | Machine housing R 53 red | 3711239 |
| 03 | Spring | 635008043 |
| 04 | Cheese-head screw M 8x50 | P...487 E |
| 05 | Serrated lock washer | P...499 E |
| 06 | Bearing block | 4711352 |
| 07 | Spring washer | P...498 Z |
| 08 | Compression spring | 6345201 |
| 09 | Shaft | 3711318 |
| 10 | Retaining ring up to machine no. 8344 | 6295182 |
| 10a | Retaining ring beg. machine no. 8345.001 | P...500 M |
| 11 | Washer Ø 15 | P...496 Y |
| 12 | Wheel up to machine no. 8344 | 6415371 |
| 12a | Wheel beg. machine no. 8345.001 | 741.074 |
| 13 | Washer 16x28x0.5 mm | P...510 |
| 14 | Bearing block with shaft | 3711281 |
| 15 | Wheel cover red beg. machine no. 8345.001 | 741.076 |
| 16 | Rubber tap | P...070 D |



Stromlaufplan R 43 / R 53-1100 230-240V / 50 Hz bis Masch. Nr. 8239



R 53 -1100 / Ultra High-Speed

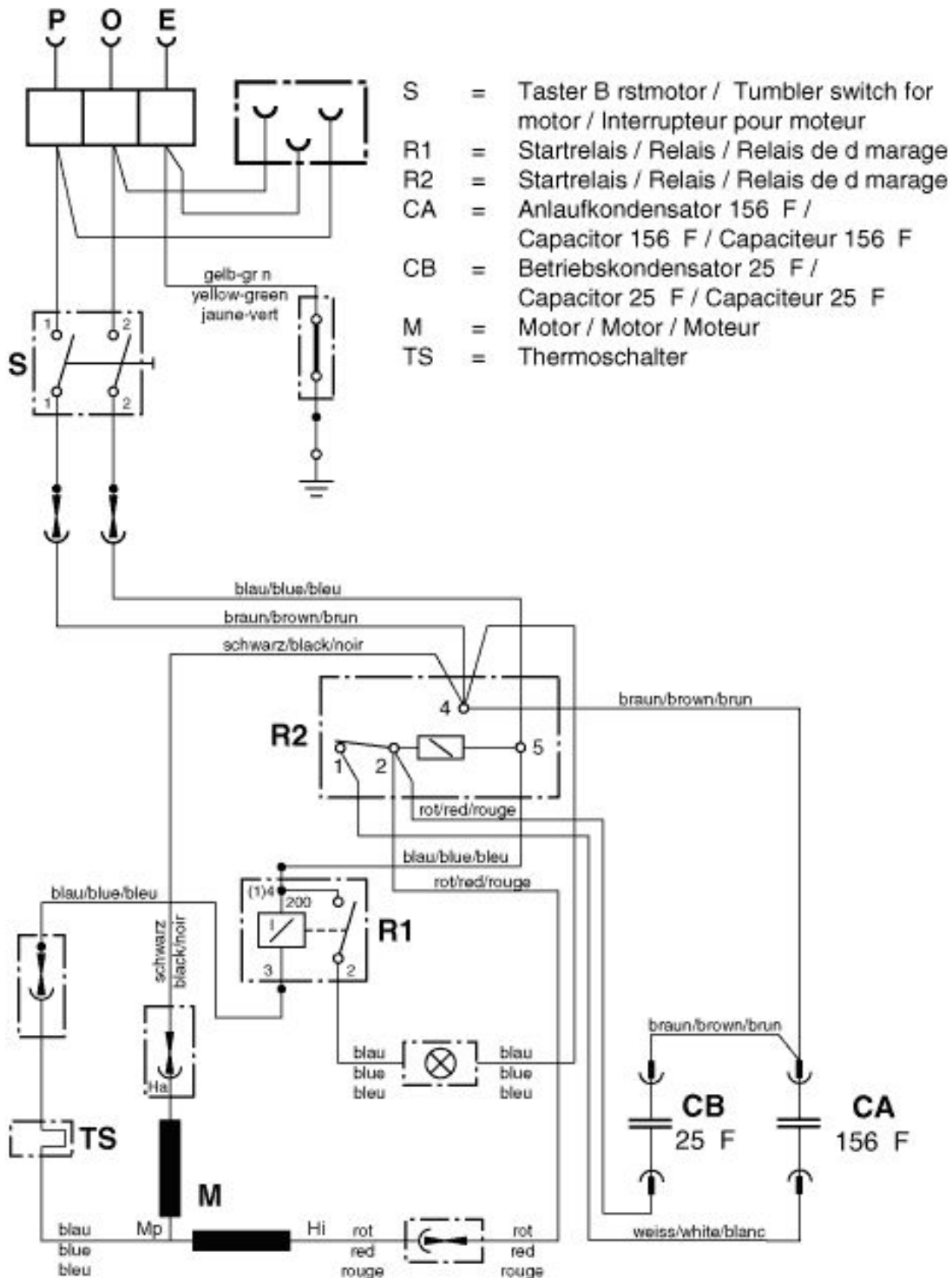
Wiring diagram

up to machine no. 8239

As at: 03/30/17 Time:14:21

| Pos. | Description | Reference |
|------|--|-----------|
| CA | Capacitor 156 μ F | 782.307 |
| CB | Capacitor 25 μ F | P...385J |
| LS | Protection de puissance up to machine no. 8239 | P...352 |
| M | Motor | 785.200 |
| R | Relais 2CR105-262 up to machine no. 8239 | 6630434 |
| R. | Relais 2CR105-196 | 6630440 |
| S | Tumbler switch for motor | 6650454 |

Stromlaufplan R 43 / R 53-1100 230-240V / 50 Hz ab Masch. Nr. 8240



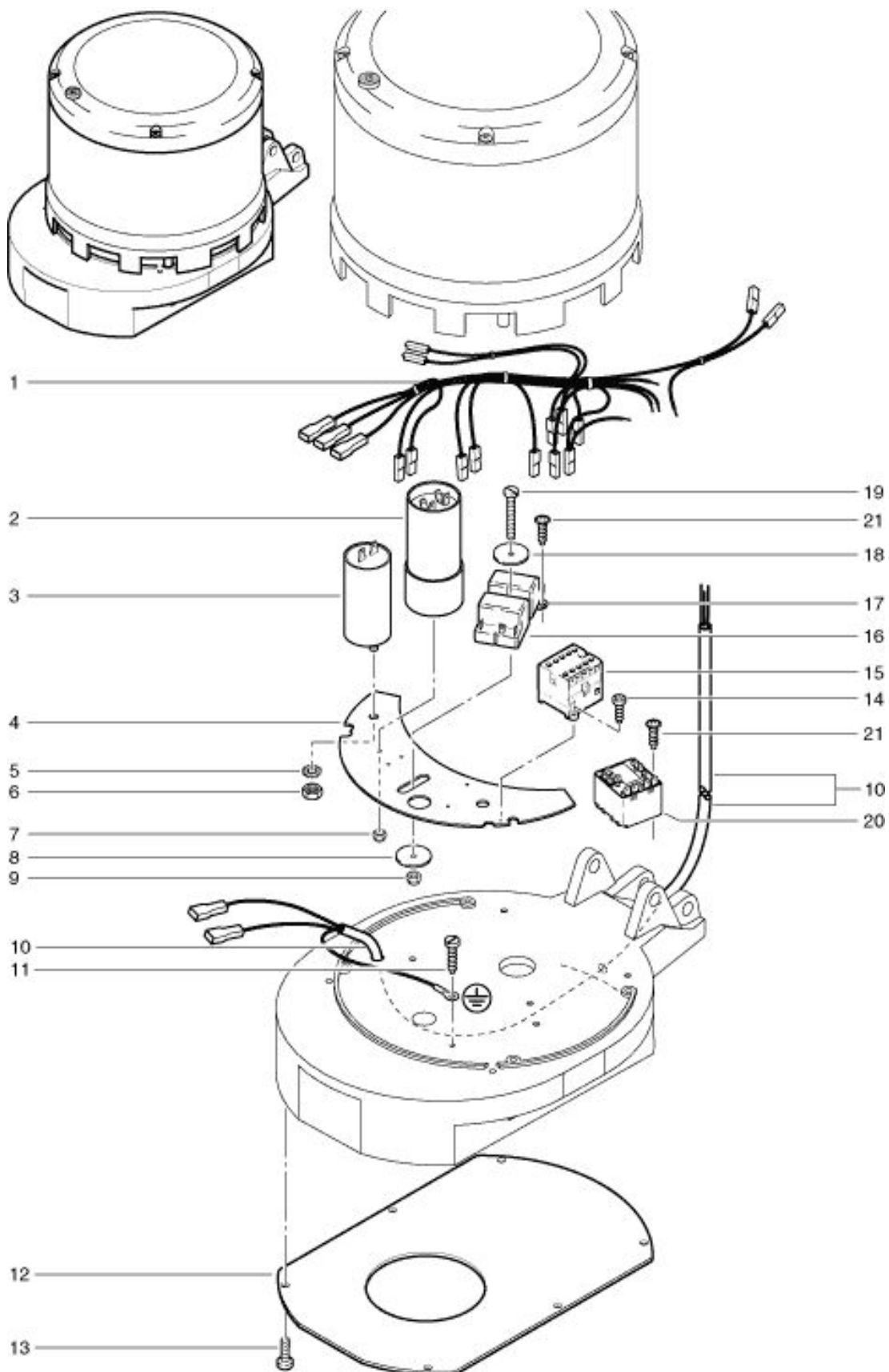
R 53 -1100 / Ultra High-Speed Wiring diagram as from machine no. 8240

As at: 03/30/17 Time:14:22

| Pos. | Description | Reference |
|-------------|---------------------------------|------------------|
| CA | Capacitor 156 μ F | 782.307 |
| CB | Capacitor 25 μ F | P...385J |
| M | Motor | 785.200 |
| R1 | Relais ER4 10.2/8.40A.702 | 420.331 A |
| R2 | Relais as from machine no. 8240 | P...350 |
| S | Tumbler switch for motor | 6650454 |
| TS | thermoswitch | |

R 53 -1100 / Ultra High-Speed Electronic

As at: 03/30/17 Time:14:23



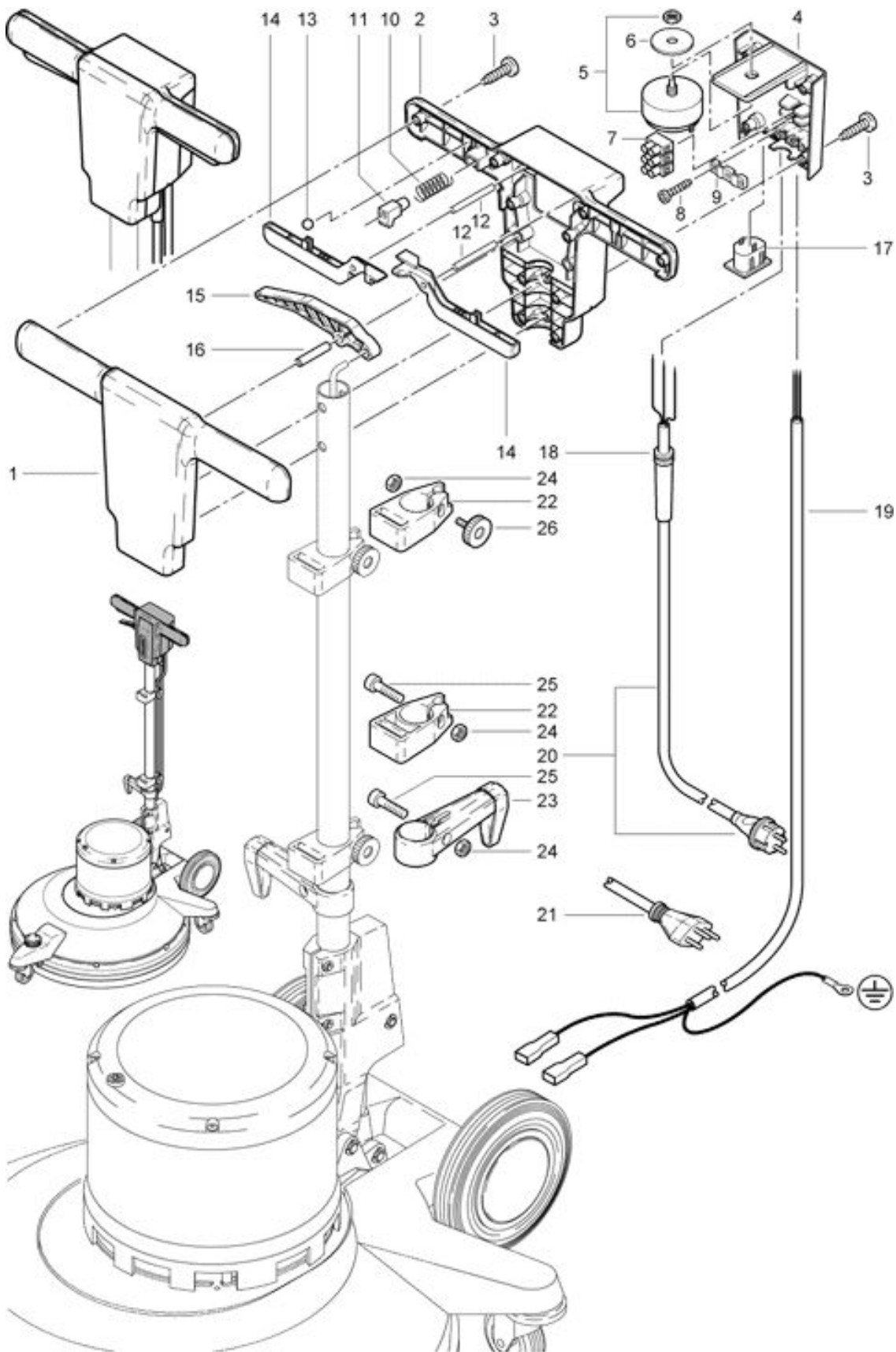
R 53 -1100 / Ultra High-Speed Electronic

As at: 03/30/17 Time:14:23

| Pos. | Description | Reference |
|-------------|---------------------------------|--------------------------|
| 01 | Wiring compl. | 782.101 |
| 02 | Capacitor 156 µF | 782.307 |
| 03 | Capacitor 25 µF | P...385 J |
| 04 | Reinforcement piece | up to machine no. 8239 |
| 04. | Reinforcement piece | as from machine no. 8240 |
| 05 | Serated lock washer M 8 | 790.351 |
| 06 | Hexagon screw M 8 | 749.303 |
| 07 | Stop nut M 5 | P...499 E |
| 08 | Washer M 6x25 | P...491 M |
| 09 | Stop nut M 4 | P...492 G |
| 10 | Wiring for motor | P...497 Y |
| 11 | PT screw KA | P...492 D |
| 12 | Bottom plate | 782.310 |
| 13 | Overhead screw M 5x12 | P...478 B |
| 14 | Panhead screw M 4x20 | 4711268 |
| 15 | Power protecteur | P...475 L |
| 16 | Relais 2CR105-262 | P...515 G |
| 17 | Relais ER4 10.2/8.40A.702 | P...352 |
| 18 | Washer M 5x20x1,5 | 6630434 |
| 19 | Pan Head screw M 4x45 | 420.331 A |
| 20 | Relais as from machine no. 8240 | P...498 I |
| 21 | PT screw KA 30x10 | P...475 X |
| | | P...350 |
| | | P...516 A |

R 53 -1100 / Ultra High-Speed
Top part front side

As at: 03/30/17 Time:14:23



R 53 -1100 / Ultra High-Speed

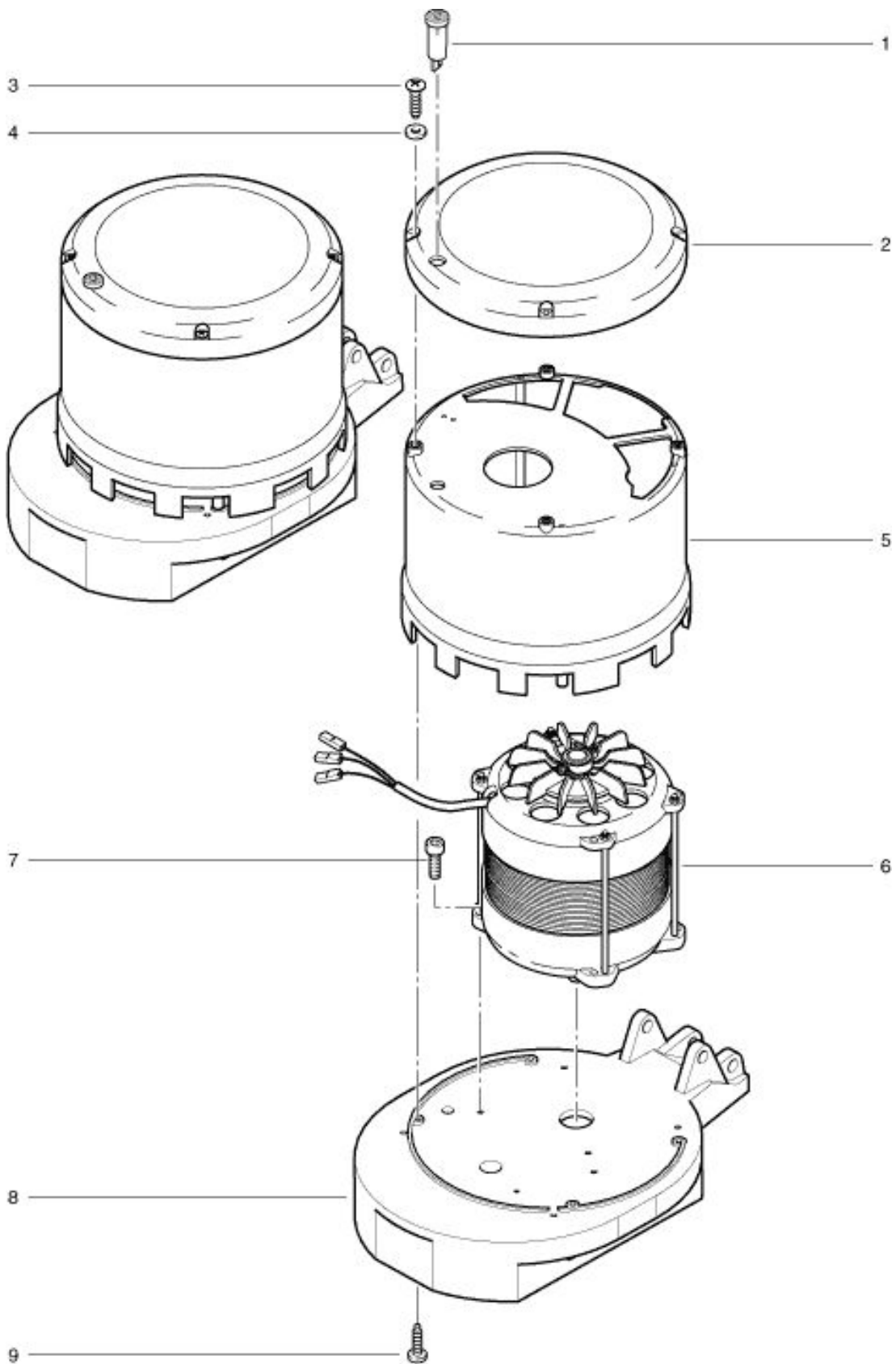
Top part front side

As at: 03/30/17 Time:14:23

| Pos. | Description | Reference |
|-------------|-----------------------------|------------------|
| 01 | Top part front side | 741.201 |
| 02 | Top part back side | 741.202 |
| 03 | PT-screw KA 50x25 | P...515 L |
| 04 | Connection box | 741.310 |
| 05 | Switch | 6650454 |
| 06 | Washer Ø 12x37x3 | P...496 |
| 07 | Hose clamp | P...383 N |
| 08 | PT screw KA 50x20 | P...515 K |
| 09 | Cable clamp | 742.321 |
| 10 | Belt | 742.209 |
| 11 | Security switch | 742.208 |
| 12 | Straight pin Ø 6x50 | P...512 M |
| 13 | Ball Ø 8 mm | 6440641 |
| 14 | Switch handle | 741.204 |
| 15 | Shaft adjustment lever | 741.207 |
| 16 | Straight pin Ø 8x40 | P...512 P |
| 17 | Plug socket | P...380 B |
| 18 | Antikink sleeve | 660011014 |
| 19 | Wiring for motor | 782.310 |
| 20 | Mains cable 20 m VDE | 656020155 |
| 21 | Mains cable 20 m SEV | 65602015501 |
| 22 | Solution tank holder | 4.711.231 |
| 23 | Cable hook | 3.711.029 |
| 24 | Hexagon nut M 6 | P...490 D |
| 25 | Hexagon socket screw M 6x25 | P...486 T |
| 26 | Star handle Ø 32 M 6x25 | P...253 G |

R 53 -1100 / Ultra High-Speed Motor

As at: 03/30/17 Time:14:24



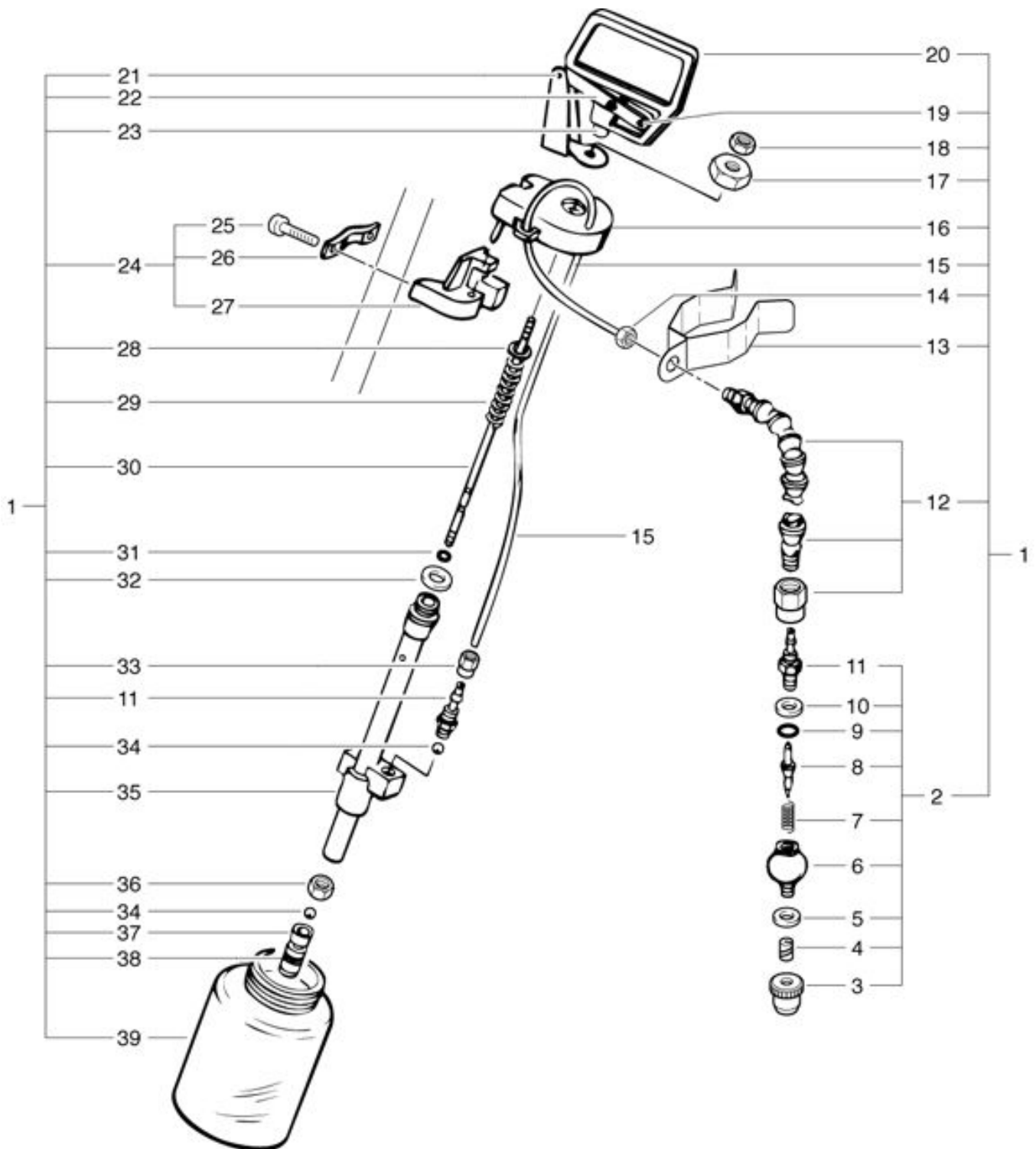
R 53 -1100 / Ultra High-Speed Motor

As at: 03/30/17 Time:14:24

| Pos. | Description | Reference |
|-------------|-----------------------------|------------------|
| 01 | Signal lamp red | P...355 |
| 02 | Red cap | 782.205 |
| 03 | Screw M 5x10 | P...481Z |
| 04 | Washer M 5 | P...497G |
| 05 | Motor housing | 782.301 |
| 06 | Motor complete | 785.200 |
| 07 | Hexagon socket screw M 6x25 | P...486T |
| 08 | Motor support red | 782.400 |
| 09 | PT-screw KA 50x25 | P...515L |

R 53 -1100 / Ultra High-Speed Spray unit

As at: 03/30/17 Time:14:24



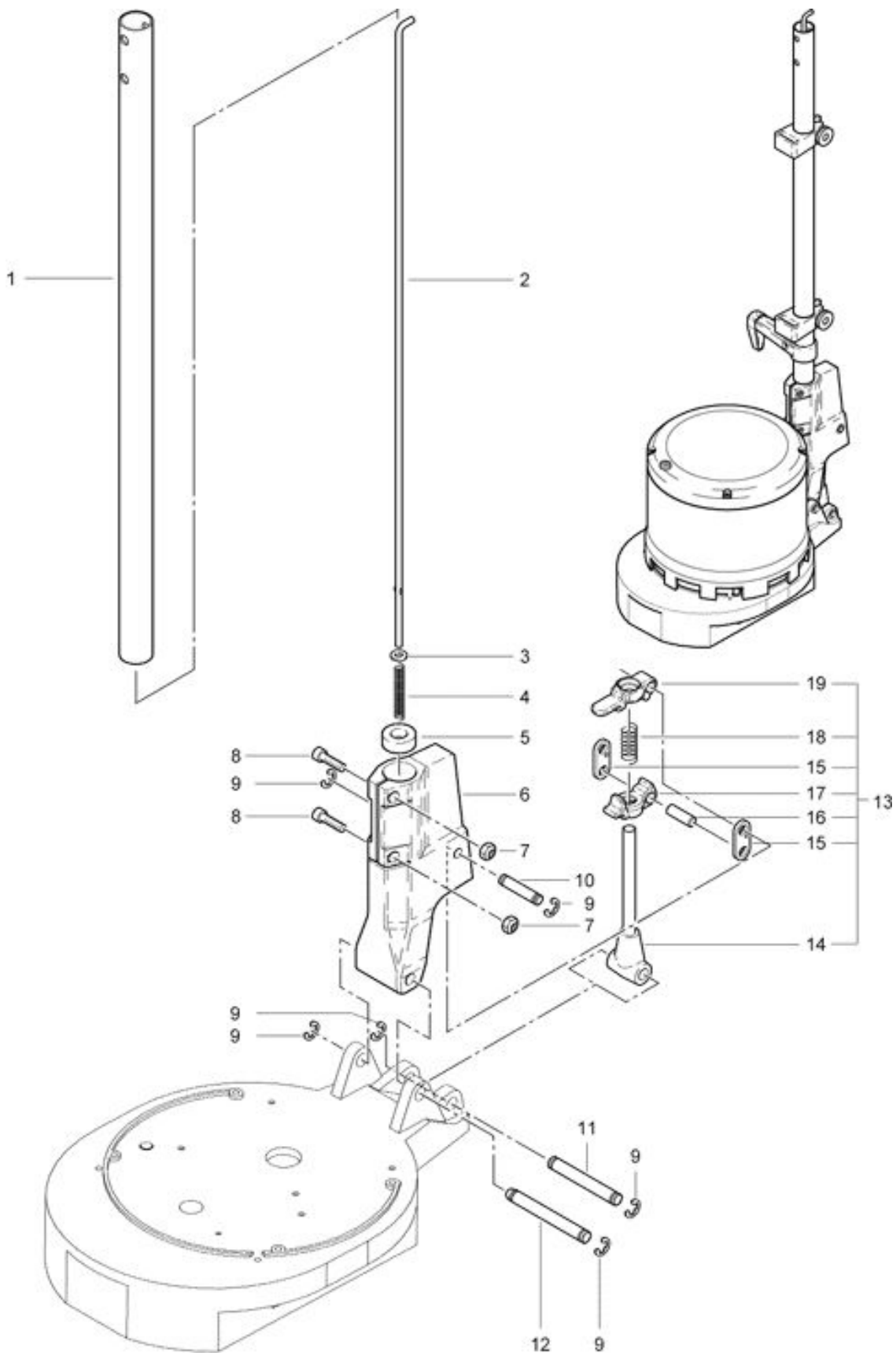
R 53 -1100 / Ultra High-Speed Spray unit

As at: 03/30/17 Time:14:24

| Pos. | Description | Reference |
|-------------|----------------------------|------------------|
| 01 | Spray unit complete | 752.900 |
| 02 | Spry nozzle complete | 2015136 |
| 03 | Spray nozzle | 672015015 |
| 04 | Spinner | 3015053 |
| 05 | Leather gasket | 6490294 |
| 06 | Threaded nipple | 4015072 |
| 07 | Compression spring | 634015081 |
| 08 | Nozzle readier | 672015133 |
| 09 | O-ring | 6456832 |
| 10 | Leather gasket | 6490295 |
| 11 | Hose connector | 4015089 |
| 12 | Flexible hose, complete | 3015138 |
| 13 | Nozzle holder | 752.905 |
| 14 | Hexagon nut M 10 | P...491 O |
| 15 | Hose | 3015153 |
| 16 | Cover complete | 3015119 |
| 17 | Nut | 604015063 |
| 18 | Hexagon nut M 6 | P...491 E |
| 19 | Straight pin 5x25 | P...512 J |
| 20 | Lever | 4015145 |
| 21 | Lever bracket | 4015117 |
| 22 | Lever | 3015144 |
| 23 | Pull strap | 672015147 |
| 24 | Holder with clip, complete | 2015084 |
| 25 | Hexagon bolt M 6x40 | P...486 Y |
| 26 | Clip | 4711035 |
| 27 | Retaining piece | 3015079 |
| 28 | Washer M 6 | P...496 V |
| 29 | Compression spring | 634015151 |
| 30 | Piston rod | 672015149 |
| 31 | O-ring | 6456856 |
| 32 | Gasket | 6495196 |
| 33 | Cap nut | 4015090 |
| 34 | Ball | P...316 Y |
| 35 | Valve body, complete | 3015150 |
| 36 | Hexagon nut M 6 | P...491 E |
| 37 | Piston | 4015068 |
| 38 | Seal | 6495361 |
| 39 | Tank | 4015113 |

R 53 -1100 / Ultra High-Speed Shaft

As at: 03/30/17 Time:14:25



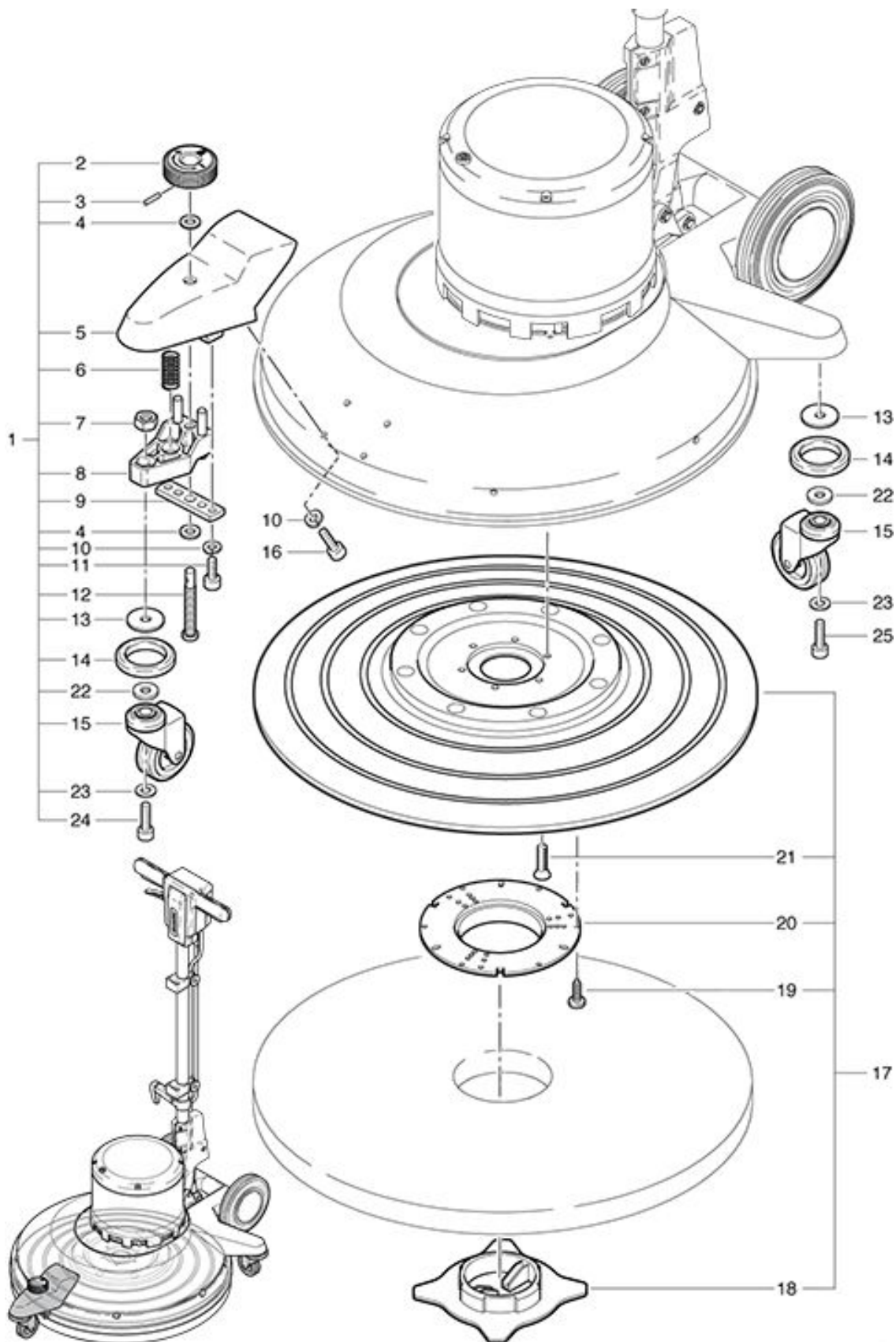
R 53 -1100 / Ultra High-Speed Shaft

As at: 03/30/17 Time:14:25

| Pos. | Description | Reference |
|-------------|--|------------------|
| 01 | Shaft tube | 742.410 L |
| 02 | Rod | 742.212 L |
| 03 | Compressing spring | 634711031 |
| 04 | Washer M 6 | P...496 K |
| 05 | Guide sleeve | 623711022 |
| 06 | Shaft adjustment unit red | 741.260 |
| 07 | Nut M 6 | P...490 D |
| 08 | Screw M 6x25 | P...486 T |
| 09 | Retaining washer | P...499 Q |
| 10 | Axle 10x50 | 672711018 |
| 11 | Axle | 672711017 |
| 12 | Axle | 672711016 |
| 13 | Shaft adjuster, complete including Items 14-19 | 2711133 |
| 14 | Adjuster shaft | 3711011 |
| 15 | Holder | 4711014 |
| 16 | Axle 10x29 | 672711019 |
| 17 | Adjuster short | 3711237 |
| 18 | Compressing spring | 634711020 |
| 19 | Adjuster long | 3711236 |
| 20 | Carrier | 6925312 |
| 21 | Countersunk screw M 6x20 | P...480 H |

R 53 -1100 / Ultra High-Speed Height adjustment and pad holder

As at: 03/30/17 Time:14:25



R 53 -1100 / Ultra High-Speed Height adjustment and pad holder

As at: 03/30/17 Time:14:25

| Pos. | Description | Reference |
|-------------|--|------------------|
| 01 | Castor holder complete in red including Items 2-15, 22, 23, 24 | 2711368 |
| 02 | Grip | 3711266 |
| 03 | Clamping sleeve 3x20 | P...512 V |
| 04 | Washer M 10 | P...496 Z |
| 05 | Wheel housing red | 3711261 |
| 06 | Compression spring | 6345110 |
| 07 | Hexagon nut M 10 | P...491 N |
| 08 | Adjusting piece | 3711262 |
| 09 | Guide plate | 3711263 |
| 10 | Lock washer M 6 | P...498 U |
| 11 | Cylindrical screw M 6x20 | P...486 P |
| 12 | Special screw | 672711265 |
| 13 | Washer 10,5x48x2 mm | 4711264 |
| 14 | ring | 780.129 |
| 15 | Castor | 6415352 |
| 16 | Cylindrical screw M 6x18 | P...486 O |
| 17 | Drive plate cpl. R 43 including Items 18-21 | 6925313 |
| 17. | Drive plate cpl. R 53 including Items 18-21 | 6925310 |
| 18 | Centergrip | 6925311 |
| 19 | PT-screw KA 40x16 | P...516 C |
| 20 | Carrier | 6925312 |
| 21 | Countersunk screw M 6x20 | P...480H |
| 22 | Washer M 10 10,5/25/2 DIN 522 | P...498 R |
| 23 | Washer M 10 10,5/18/0,9 DIN 6798 A | P...498 O |
| 24 | Screw M 10x30 DIN 912 | P...487 O |
| 25 | Screw M 10x25 DIN 912 | P...487 K |