

TW 412

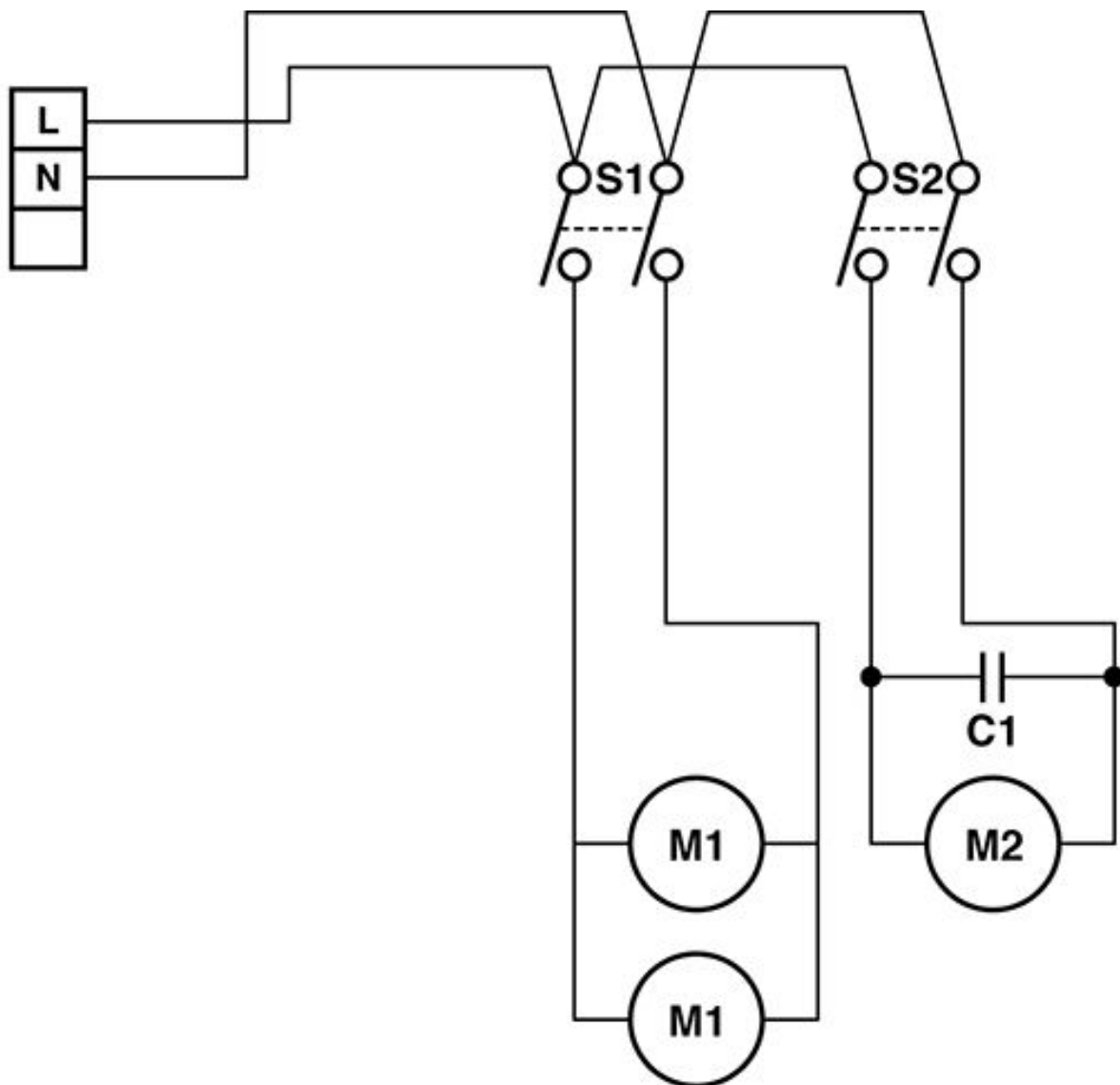
Cover-Housing

As at: 03/16/17 Time:14:08

Pos.	Description	Reference
01	Cover	043.201
02	Hinge pin	043.504
03	Seal for cover	043.202
04	Filter	043.205
05	Cover employment	043.204
06	screw WN 1411 KA30x16	P...516 F
07	Bent tube	043.207
08	screw WN1452 KA 30x10 A2	P...515 Q
09	Cover	043.502
10	PT screw KA 30x16	P...516 F
11	Boiler compl. exist out position 11a-14	043.300
11a	Recovery tank	043.301
12	Fillister-head screw M 3x8	P...476 O
13	Washer M 3	P...497 J
14	Spindle	043.302
15	Cover compl.	043.500
16	Washer M 4	P...497 C
17	PT screw KA 40x25	P...516 O
18	Handle	043.503
19	Intake socket	043.505
20	screw WN 1412 KA40 x 25	P...516 O
21	Wheel	380.135
22	Wheel cover	300.242c
23	Guard ring with cap	P...499 L
24	Washer 13x28x4	P...510 P
25	Axle	043.501

TW 412
Wiring diagram

As at: 03/16/17 Time:14:08



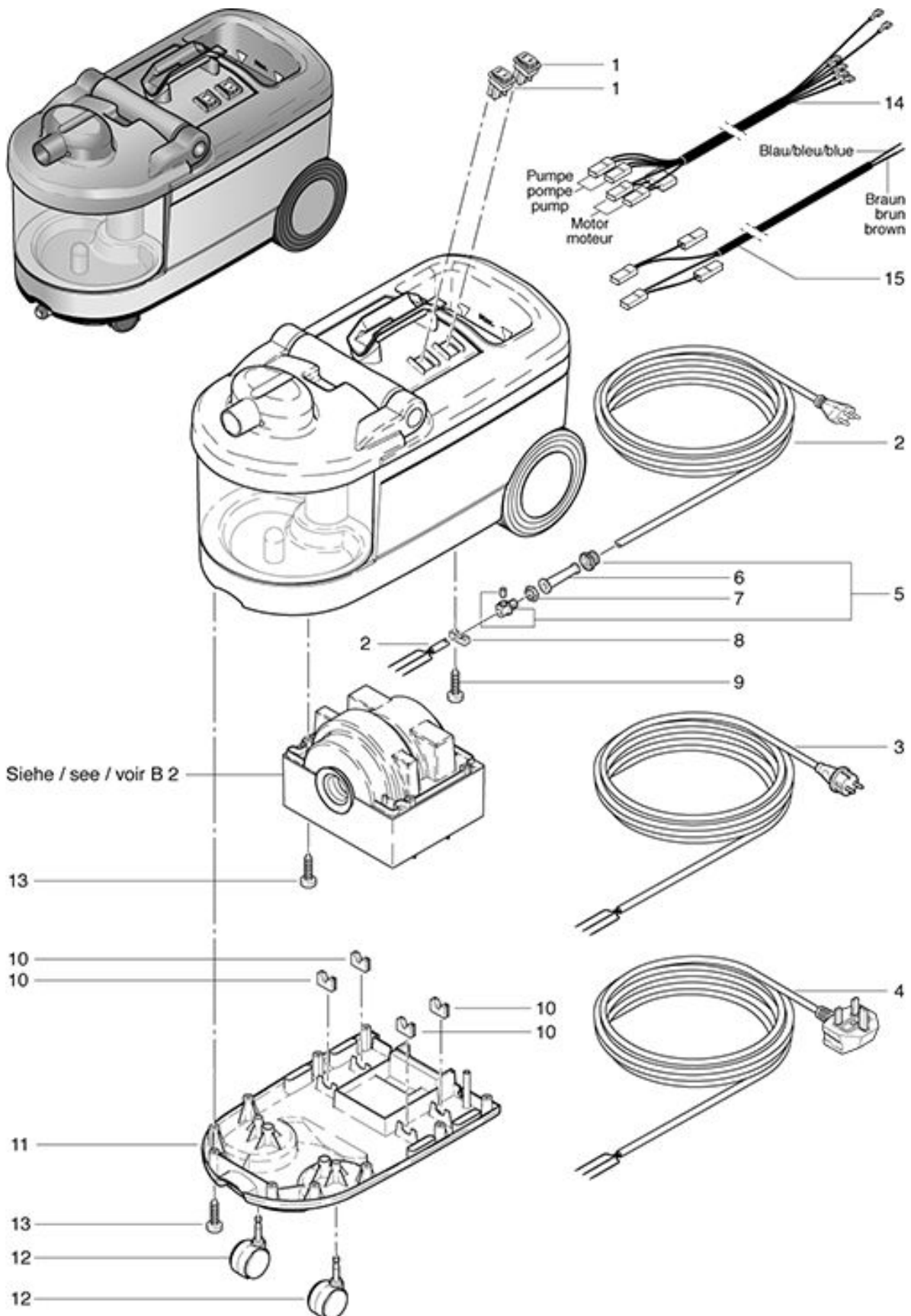
- S1 = Wippenschalter 230 V 1 / Interrupteur 230 V 1 / Valve-switch 230 V 1
- S2 = Wippenschalter 230 V 2 / Interrupteur 230 V 2 / Valve-switch 230 V 2
- C1 = Entstörkondensator 0,15 uF / Condensateur 0,15 uF / Capacitor 0,15 uF
- M1 = NDS-GX-Pumpe 230 V/50 Hz / Pompe-NDS-GX-230 V/50 Hz /
NDS-GX-pump 230 V/50 Hz
- M2 = Saugmotor / Motuer d'aspiration / Vacuum motor

TW 412

Wiring diagram

As at: 03/16/17 Time:14:08

Pos.	Description	Reference
C 1	Capacitor 0,15 uF	P...391
M 1	NDS-GX-pump 230V/50Hz	P...811
M 2	Vacuum motor	P...876
S 1	Valve-switch 230V 1	P...240
S 2	Valve switch 230V 2	P...240

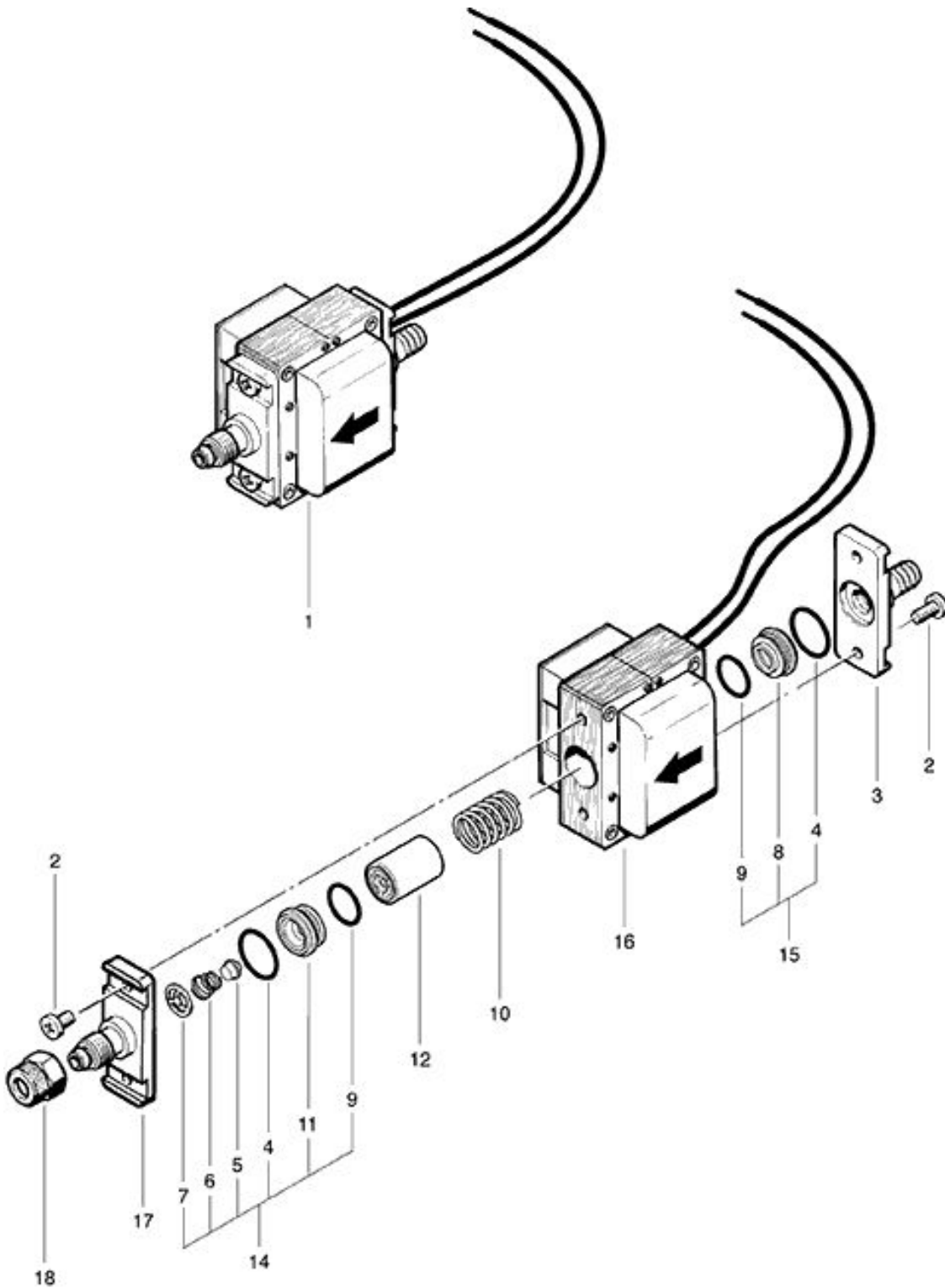


TW 412

Pump assembling vacuum motor and Electrical connection

As at: 03/16/17 Time:14:09

Pos.	Description	Reference
01	Valve-switch 230 V	P...240
02	Electr. Connection 7,5 m SEV	P...287
03	Electr. Connection 7,5 m VDE	P...288
04	Electr. Connection 7,5 m GB	P...277
05	Cable clamp	P...279
06	Cable grommet	P...280
07	Conter nut PG 9	P...279 H
08	Cable clamp	4611085
09	PT-screw KA 50x16	P...516 F
10	Pump holder	043.603
11	Bottom	043.401
12	Swivel castor wheel Ø 50 mm	P...204 F
13	PT-screw KA 50x16	P...515 Z
14	Harnais de cable du moteur + pompe	044.614
15	cable tree set	043.614



TW 412

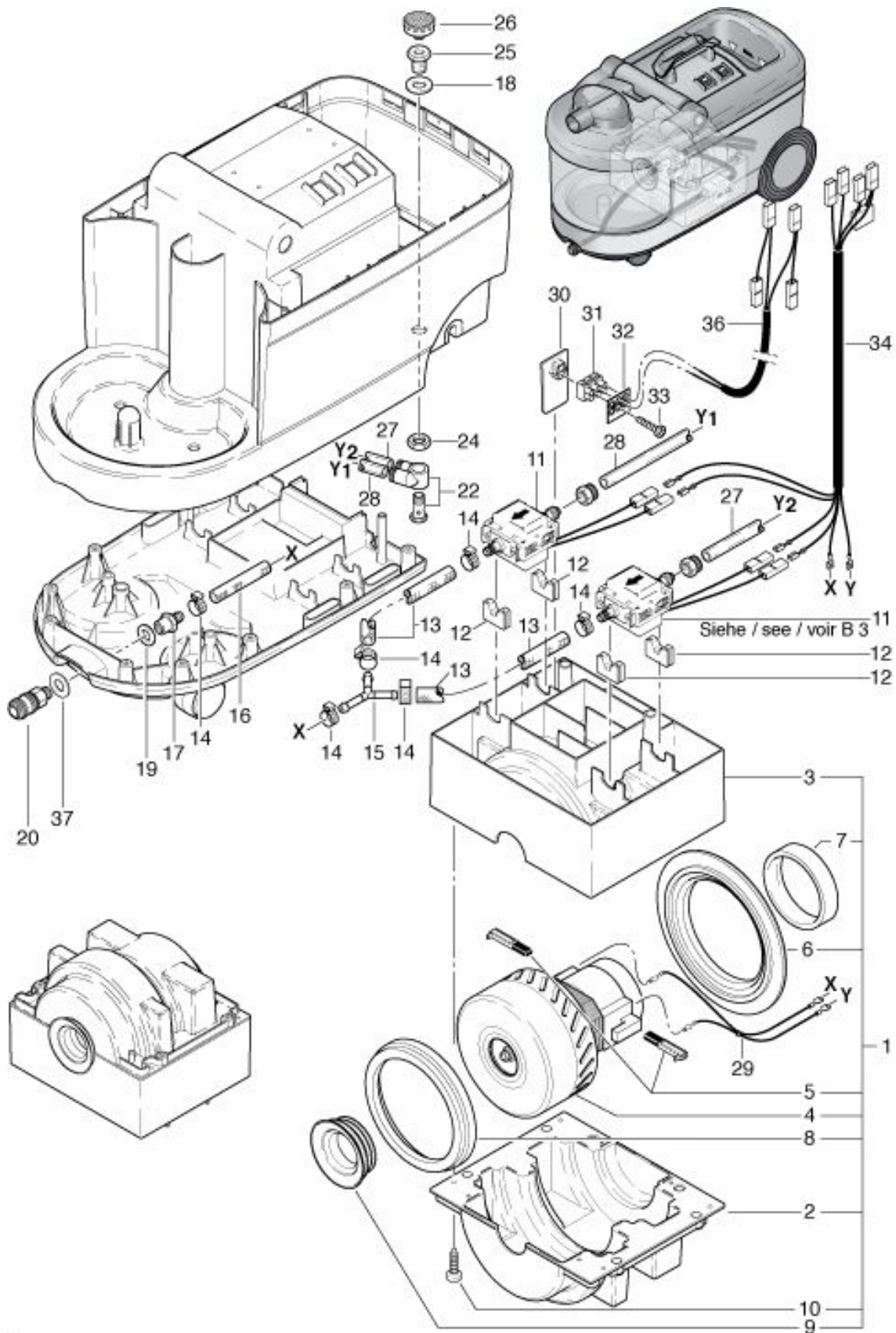
NDS-GX-pump

As at: 03/16/17 Time:14:10

Pos.	Description	Reference
01	NDS-GX-pump 230V/50Hz	P...811
02	Screw M 4x10	P...481 M
03	Connection even	P...809 M
04	O-ring Ø 14x1,5 mm	P...809 K
05	Valve cone	P...810 S
06	Valve spring	P...809 P
07	Arrester	P...809 N
08	Spring support	P...809 F
09	O-ring Ø 12x1,5	P...809 L
10	Pressure spring for piston	P...809 E
11	Valve seating	P...809 Q
12	Piston	P...809 B
14	Valve seating compl. including items 4-7, 9+11	P...810 Y
15	Spring support compl. including items 4,8+9	P...810 X
16	Magnet coil compl.	380.809 A
17	Connecting piece straight with thread	P...810 G
18	Sleeved nut M 12x1	P...523 G

TW 412
Vacuum motor-Pump

As at: 03/16/17 Time:14:10



TW 412

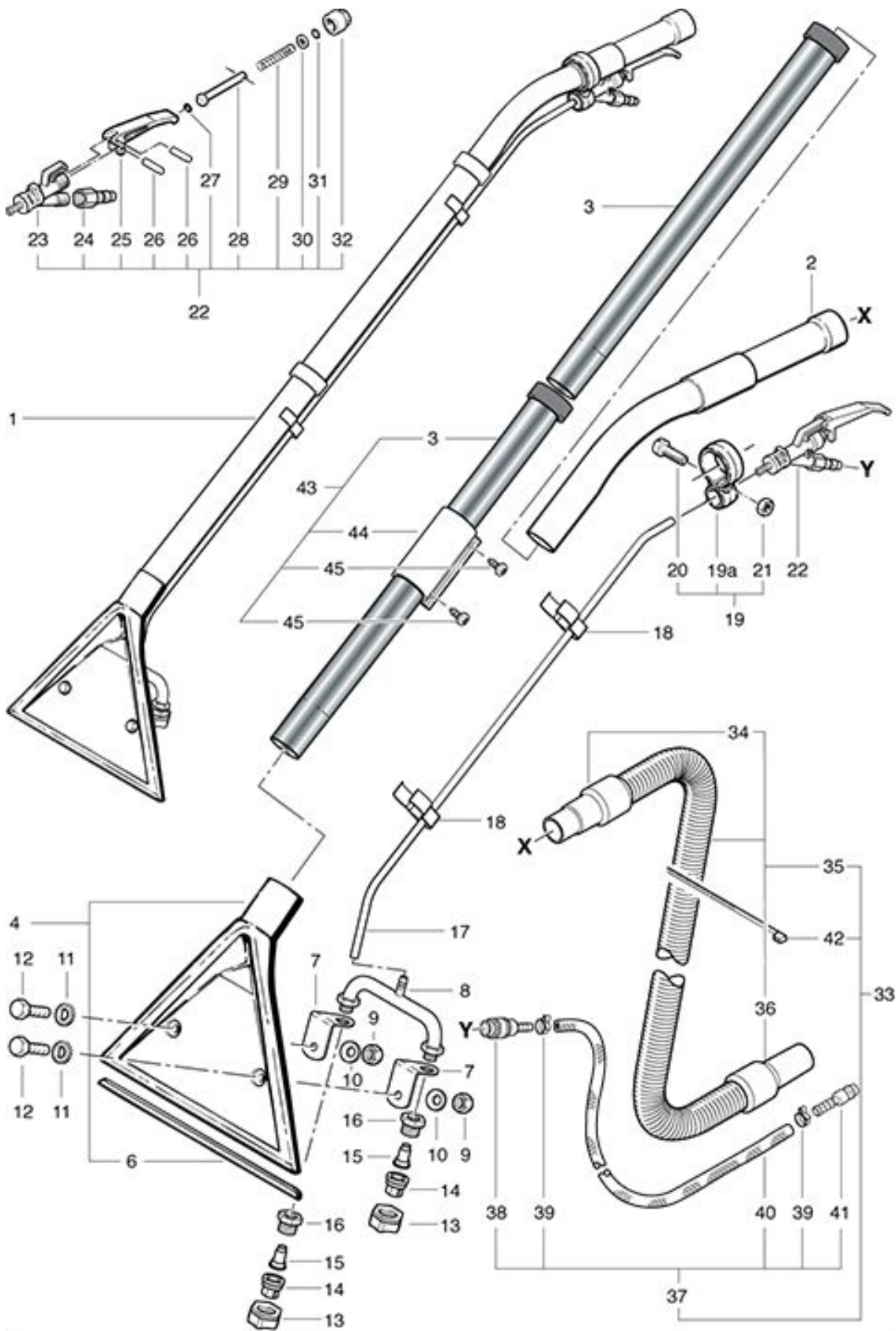
Vacuum motor-Pump

As at: 03/16/17 Time:14:10

Pos.	Description	Reference
01	Fan unit complete including: items 2-10	043.600
02	Lower jacket of motor	043.602
03	Upper jacket of motor	043.601
04	Suction motor	P...876
05	Pair of Charbon brushes	
06	Profile	043.606
07	Seal for motor	043.607
08	Motor sealing ring	P...971 J
09	Seal	043.605
10	PT-screw KA 50x16	P...515 Z
11	NDS_GX-pump 230V/50Hz	P...811
12	Pump holder	043.603
13	Hose pump Y-piece	044.610
14	Hose clamp 15.7 mm	P...550 B
15	Y-piece 8 mm	P...542 E
16	Hose Y-piece-coupling	044.609
17	Male connector NW 8-1/4"	P...525 K
18	Gasket 30/17x2 mm	P...097
19	Washer 14/24x2mm	P 260
20	Female quick connector 1/4" big	P...500 B
22	Threaded joint 8-1/4"	044.618
24	Hexagon nut 3/8"	P...535 B
25	Reducer 3/8"-1/4"	P...535 A
26	Fresh water filter	P...106
27	Hose 8x6x250 mm	044.617
28	Hose 8x6x450 mm	044.616
30	Support	043.608
31	Terminal 3 poles	P...383 A
32	Marking plate	P...390
33	PT screw KA 30x16	P...516 F
34	Cable for magnetic valve	044.614
35	cable tree vaccum motor	043.613
36	cable tree set	043.614
37	Washer DIN 522 M 12 13/30/1,6	P 496 A

TW 412
Suction set

As at: 03/16/17 Time:14:11



TW 412

Suction set

As at: 03/16/17 Time:14:11

Pos.	Description	Reference
01	Carpet adapter with 2 nozzle including items 2-32	602.000
02	Toolhandle chromed metal Ø 32	P...581 D
03	Stainless steel tube	645.002 A
04	Suction nozzle 26 cm compl. incl. Pos. 6	602.550
06	Sliding blade	P...617
07	Mounting bracket for jet ass	602.611 F
08	Double pipe bend	602.110
09	Hexagon nut M 6	P...491 E
10	Washer Ø 6,4x12,5 mm	P...499 H
11	Washer M 6	P...499 D
12	Hexagon screw M 6x20	P...472 D
13	Sleeved nut	P...523 D
14	Spraying jet grey	P...602 M
15	Flachback nozzle	P...607 E
16	Reducer 3/8"	P...535 P
17	Pressure hose Ø 6/8	P...573 A
18	Hose clip	P...670
19	Guide bride compl. including items 19a-21	P...683
19a	Guide bride	P...683 A
20	Cylindrical screw M 5x18	P...683 B
21	Hexagon nut M 5	P...490 C
22	Spraying valve compl. including items 23-32	P...681
23	Valve body	P...681 A
24	Tapped nipple 1/4" big	P...501 B
25	Lever	P...681 C
26	Cylindrical pin Ø 1,5x14,5 mm	P...681 K
27	O-ring Ø 5,23 mm	P...681 F
28	Valve pin compl.	P...681 D
29	Valve spring	P...681 E
30	Washer M 5	P...497 G
31	O-ring Ø 5 mm	P...681 G
32	Cap nut	P...681 B
33	Spray and suction hose 2,2m cpl. including items 35,37,42	043.560
34	Hose socket Ø 32 mm	P...575
35	Suction hose 2.2 m, including pos 34+36	043.561
36	Connector	P...562 C
37	Spraying hose 2,2 m cpl. including items 38-41	043.562
38	Hose connector	900.165
39	Hose clamp 13,3 mm	P...550 I
40	Pressure hose Ø 6/12x2250 mm	043.563
41	Connector	P...501 D
42	Cable tie 4.8x200 mm	P...609
43	Stainless steel tube with sliding clamp	645.003
44	Sliding clamp	012.411

